

# Tremont

THEATRE



JOHN B.  
SCHOEFFEL  
MANAGER



# *Harvard* GREEN LABEL **BEER**

We have been unwilling even in these days of the high cost of all materials used in brewing to sacrifice anything in the quality of the materials which we use for the purpose of saving in expense.

The constantly increasing Harvard Beer clientele and the pleasing words of commendation coming constantly to us demonstrate that our course in addition to being pleasing to us as a matter of principle is also a sound business policy.

**HARVARD BREWING COMPANY**

LOWELL, MASS.

BOSTON BRANCH: 45 COMMERCIAL WHARF

Suits  
Overcoats  
Marked  
Down



Copyright Hart Schaffner & Marx

## OUR MARK-DOWN SALE

**Y**OU can save \$2.00 to \$5.00 on a Suit or Overcoat, and \$1.00 to \$2.00 on a Boy's Suit or Overcoat. Stock up, as clothes will be much higher next Fall.

**The Continental Clothing House**  
Washington at Boylston Street

# STEINERT'S



Visit our new Victor Rooms at Steinert Hall and hear the first recordings of

## THE BOSTON SYMPHONY ORCHESTRA

- |       |                                      |        |               |
|-------|--------------------------------------|--------|---------------|
| 74553 | Symphony in F Minor—Finale (Part I)  | 12-in. | \$1.50        |
| 74554 | Symphony in F Minor—Finale (Part II) | 12-in. | \$1.50        |
| 64744 | Lohrgrin—Prelude to Act III          | Wagner | 10-in. \$1.00 |

We carry the largest stock of Victor Records in New England

New England's Largest Musical Instrument House

162 Boylston St. 35 Arch St.



## CHILD PORTRAITURE AT ITS BEST IS EXPRESSED IN THE ONE WORD KINDERGRAPHS

(Photographs of Children Only)

In the doing of one thing well lies our great success. We specialize in photographs of the little folks, and while they "telephone to Daddy," run trains or build blocks in our playroom, we make the natural, childlike photographs which mean so much now and are doubly precious in later years.

Telephone Beach 2222 for an appointment, or come to the studio and let us show you our work and tell you about our reasonable prices.

180 TREMONT ST. Telephone Beach 2222 BOSTON

Trademark Reg. U.S. Pat. Off.



## PICTURES

of home, from home, come closer to the hearts of the boys "over there" than anything else, except letters. Both are National obligations and the best preventives against homesickness. Ask the "boys."

Pictures and picture framing. High-grade developing, printing and enlarging.

**ROBEY-FRENCH CO.**  
Eastman Kodak Company  
38 BROMFIELD ST., BOSTON

# Tremont Theatre

Theatres Company of Boston.....Lessee  
 John B. Schoeffel.....Manager  
 Albert M. Sheehan.....Business Manager

The evening performances terminate in ample time for Suburban patrons to reach the theatre trains at both North and South Stations by taking cars in the Boylston Street Station of the Subway or the Washington Street Tunnel. Every car running through the Subways, either North or South, stops at the Boylston Street Stations.

**Responsibility.** Management will not be responsible for articles contained in bags, packages or in pockets of any clothing checked, nor for the loss of or damage to articles or garments left in the theatre or checked in coat rooms by patrons.

**Lost Articles** Articles found by patrons should be left at Box Office. Articles will be retained for thirty days, at the expiration of which time, if unclaimed, they will be returned to the finder.

**No Head Covering** to be worn in the theatre during performance.

**No fees** are permitted. You are requested not to disregard this rule.

**Cloak Rooms for Ladies** will be found in the rear of both lower floor and first balcony. The Cloak Room in the Foyer is for Gentlemen only.

**Perfect Sanitary Conditions** are maintained in this theatre by the use of Chloro-Naphtholeum and the automatic appliances of the West Disinfecting Company, Boston, Mass.

Address all communications in regard to advertising in this program to Albert M. Sheehan, Tremont Theatre, Boston

## Look Pleasant, Please! It's only for a Moment

You have heard the story of the old-time picture-taker who said to his sitter: "Look pleasant, please. It will only be for a moment."

Her answer was: "I can't look pleasant. I've got a toothache."

The result could well be labeled, "Picture of a lady with the toothache."

Pictures with the Purdy imprint are not that kind of pictures. They are so eminently different from them that nothing but a Purdy picture gives perfect satisfaction to thousands of people who have tried countless other photographers.



145 Tremont Street

*Photography plus*

Tickets all Theatres

CASHIN'S

PARKER'S and YOUNG'S

'PHONE 6973 MAIN



# Prince George Hotel

GEORGE H. NEWTON, Manager

Formerly of Parker House, Boston

FIFTH AVENUE AND TWENTY-EIGHTH STREET

NEW YORK CITY

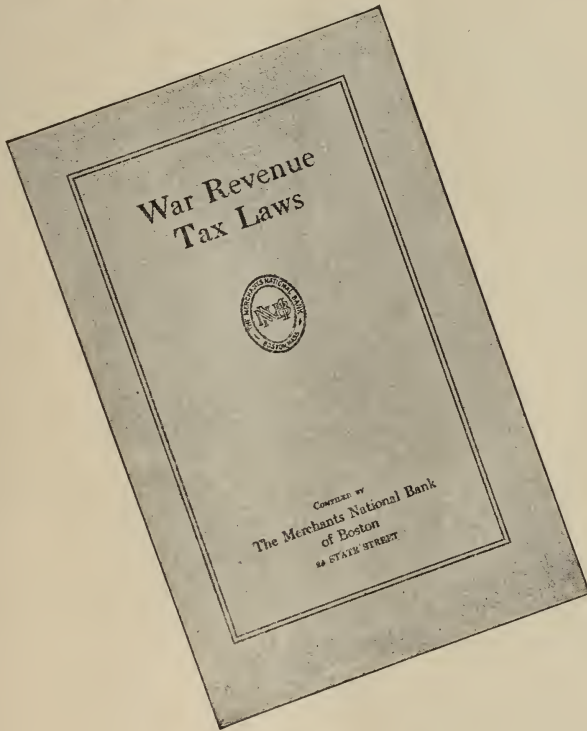
ONE OF THE MOST BEAUTIFULLY APPOINTED HOTELS  
IN NEW YORK

800  
ROOMS

Every bedroom equipped with bath and shower. All modern conveniences. Cuisine unexcelled. Prices unequalled. In the Centre of Shopping and Theatre District. Elevated and Subway Station one block distant. : : : : :

## ROOM AND BATH

ONE PERSON	- - - - -	\$2.00 and up
TWO PERSONS	- - - - -	\$3.00 and up
PARLOR, BEDROOM and BATH	- -	\$5.00 and up



**T**HIS book is a compilation of the Federal Tax Laws of September 8, 1916, March 3, 1917, and October 3, 1917, with amendments incorporated. The index and marginal references make this publication a convenient and valuable reference work. A copy will be mailed on request.

A number of rulings have been made in connection with this Act which it is not possible to incorporate in a book of this description; but our attorney will be glad to assist in interpreting the Act in its application to individuals and business houses.

**THE MERCHANTS NATIONAL BANK**  
28 STATE STREET, BOSTON

METROPOLITAN  
  
TRUST COMPANY

TWO OFFICES

40 State St., Boston    Maverick Sq., East Boston

CHECKING ACCOUNTS

Interest paid on balances over \$300

SAVINGS ACCOUNTS

Deposits go on interest the last day of each month  
We have always paid 4%

Trust Department

Transfer Department

It is the policy of this Bank to become  
acquainted with each depositor

AUTO  
REPAIRS



BISHOP MOTOR  
SALES CO.

679 Beacon Street

Tel. Back Bay 2036

THEATRE TICKETS

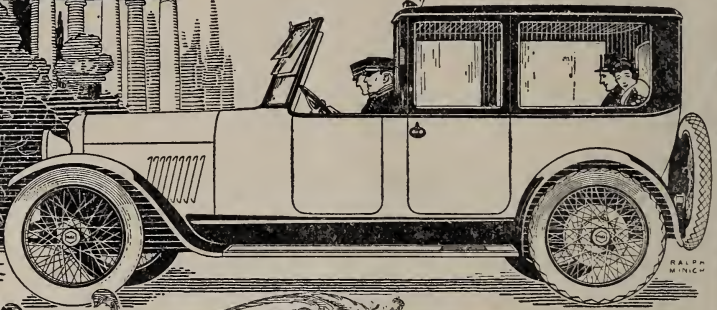
JOHN R. HEARD

HOTEL TOURAINE    TEL. BEACH 644



**A**N equitable adjustment is the second best thing a tire manufacturer can make. The first best thing is to make a tire like the Kelly-Springfield.





# PAIGE

*The Most Beautiful Car  
in America*

Your enclosed car is not practical unless it starts instantly and runs smoothly in zero weather.

Three new features of the Paige Power Plant mean 100 per cent motor efficiency in the February blizzard or August thunder shower.

**The Town Car "Six-55" 7-passenger, \$3230**

Essex "Six-55" 7-passenger \$1775; Coupe "Six-55" 4-passenger \$2850; Limousine "Six-55" 7-passenger \$3230; Sedan "Six-55" 7-passenger \$2850; Brooklands 4-passenger \$1795; Sedan "Six-39" 5-passenger \$1925; Linwood "Six-39" 5-passenger \$1330; Glendale "Six-39" Chummy Roadster \$1330; Dartmoor "Six-39" 2 or 3-passenger \$1330. All Prices f. o. b. Detroit.

**PAIGE-DETROIT CO. OF NEW ENGLAND**

**532 Commonwealth Avenue, Boston**



ANNUAL  
MARK - DOWN SALE  
— OF —  
**FURS**

Prices Reduced from 20% to 33 $\frac{1}{3}$ %  
of Our Regular Prices

*To buy now means Economy*

**WERNER - PAZOLT CO.**  
52 CHAUNCY STREET  
Second Floor

DEPOSIT YOUR LIBERTY BOND IN ONE OF OUR

# New Safe Deposit Boxes



**EXCHANGE  
TRUST CO.**

124

**Boylston Street**  
(near Tremont Street)



Inspection Invited

**MODERATE  
PRICES**

THE BEST  
**Camouflage**

Make your old clothes  
 look like

**NEW CLOTHES**

Our Processes of

**Cleaning  
 or Dyeing**

ARE THE BEST

**LEWANDOS**

Inside of  
**Limousines  
 Coupes and  
 Sedans  
 Cleaned  
 in 24 hours**

—  
**LEWANDOS**

Phone Back Bay 3900

*Our Teams and Motors Call and Deliver*

**LEWANDOS**

*Americas Greatest*

**CLEANSERS DYERS LAUNDERERS**

Boston Shops—Telephone Back Bay 3900

17 Temple Pl 284 Boylston St 248 Huntington Ave

BROOKLINE SHOP . : 1310 Beacon St Coolidge Corner

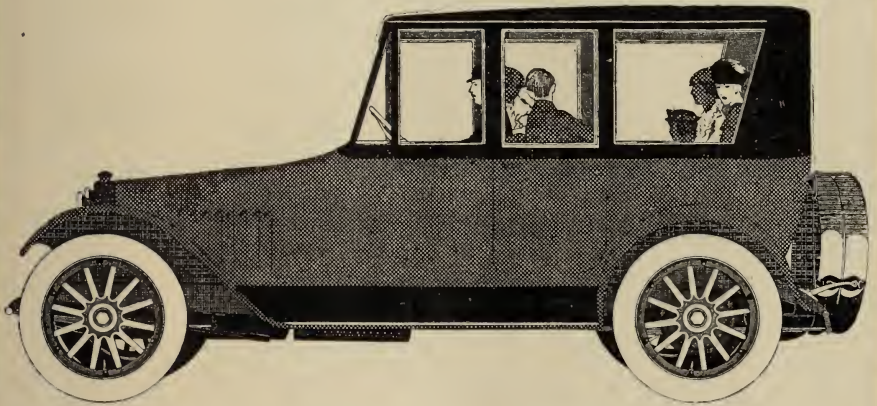
CAMBRIDGE SHOP . 1274 Massachusetts Ave Harvard Sq

See telephone book for shops in other cities

—  
**“YOU CAN RELY ON LEWANDOS”**



*Quality First*



The Chalmers Touring Sedan is a sun-parlor on wheels. If there's rain in the air or a sting in the wind, that little week-end visit need not be postponed. For theatre, ball or shopping it fills every need. \$1950 f. o. b. Detroit.

---

**Immediate Deliveries**

**Demonstration by Appointment**

---

**Chalmers Motor Co. of New England**

620 Commonwealth Avenue

::

Boston, Massachusetts

'Phone 4003 Back Bay

## In the Windows On the Avenue

—where well dressed women pause to note the newest modes in fashionable footwear, high cut shoes of kid comprise the chief display.

And when "Milady" steps inside she learns that "F. B. & C." Kid is the leather invariably used in colors to match her costume, such as Golden Brown, Field Mouse, Battleship Gray, Pearl Grey, Tobasco Brown and Ivory, either as whole shoes or with tops of "F. B. & C." White Washable Glazed Kid "No. 81."

In shoes of white, which are in remarkable vogue, it is highly important to designate "F. B. & C." White Washable Glazed Kid "No. 81" as this leather requires no muss dressing but keeps its new and unblemished appearance by the use of "Carbona Cleaning Fluid."

"F. B. & C." Kid is the only leather that  
"Fits on the Foot like a Glove on the Hand."



Look for either of these "F. B. & C." tags attached to the shoes you buy. They assure correct style and the best there is in leather.



Fashion Publicity Co.  
of New York

**"F. B. & C." Kid**



# Annual Genuine Reduction Sale

## ON CUSTOM CLOTHES MADE TO YOUR ORDER ONLY

Adhering to our long-established custom we consider it our duty to hold Our Annual Genuine Reduction Sale as usual, although the tremendous advance in prices of woolens and trimmings seems to make it prohibitive, thus affording an exceptional opportunity to purchase clothes of the highest quality, consisting of Overcoats, Business Suits, Cutaways and Dress Suits, all at greatly reduced prices.

Remember this is a genuine reduction sale and is not to be compared with the pickups or cheap made-up clothes made especially for sale purposes.

In view of the continued advance in price of all standard high-class Woolens, this offer is most advantageous.

FORMER PRICES FOR SUCH QUALITY WERE \$45, \$50 and \$55. NOW

**\$40.00**

**\$45.00**

**\$48.00**

**ALLAND BROS., Tailors, 29 Milk St. Corner Hawley Street Floor BOSTON**  
Established 1888

## THE BOOMERANG

More than two years have elapsed since this comedy was first brought out, and up to the beginning of the present season it had been seen in but two cities—New York and Chicago. In the former it ran for fifteen months at the Belasco Theatre, while in the latter at Powers' Theatre it rounded out an eight months' engagement that was remarkable in many ways. But regardless of the fact that it has taken "The Boomerang" two years to reach Boston, local playgoers will see the original superb cast intact, including as it does such well-known and popular players as Arthur Byron, Martha Hedman, Wallace Eddinger, Ruth Shepley, Gilbert Douglas, Kathryn Keys, Richard Malchien, John N. Wheeler and many others, all of whom have been continuously identified with the comedy since the date of its first presentation. It is a well-known fact that Mr. Belasco never sends out duplicate companies in Belasco successes, and in the present instance he is credited with providing one of the most brilliant acting ensembles that has graced the stage in many seasons.

"The Boomerang" is in three acts and is said to bear evidence all the way through of having been staged by a master hand. It acquires its title in that a young physician, who sets out to cure a patient of love-sickness and jealousy, falls in the end a victim of his own remedy. The story has to do with a wealthy young chap, Bud Woodbridge, who is love with Grace Tyler and is insanely jealous of Preston DeWitt. Bud's mother, fearing he is ill, and knowing nothing of his heart affairs, takes him to Doctor Gerald Sumner, who has just returned from abroad and hung out his shingle. The doctor examines Bud, but can find nothing the matter until, as he is taking the young man's pulse, the names of Grace Tyler and Preston DeWitt are mentioned by the doctor's assistant. The acceleration of the pulse gives the doctor his first clew and he learns the whole trouble by a few questions.

Dr. Sumner has just engaged a very pretty office assistant, Virginia Xelva. He makes Bud promise to obey him for a month, and places Miss Xelva in the Woodbridge home as the young man's nurse. He also prescribes plenty of physical exercise, and the absence of all friends, especially Miss Tyler.

The plan works admirably and a month later Bud is fairly happy in Miss Xelva's charge. Bud's birthday is at hand, and the doctor arranges a surprise party. Miss Tyler attends and promptly becomes insanely jealous of Miss Xelva, the pretty nurse. Also, the doctor now discovers how attractive Miss Xelva really is, and he too, is stricken with the very disease he has undertaken to cure Bud of. From this point on the fun is of the brightest and smartest, with many sly pokes at the medical profession.

The very simplicity of the tale is said to offer unusual opportunities for the close observation of those perfect details and niceties of production which long ago become inseparable from every Belasco play.



A SCENE FROM  
**“THE BOOMERANG”**



AN INTRODUCTION LEADS TO EVERLASTING FRIENDSHIP

**FOSS CHOCOLATES**



*Quality and  
Premiere*

**MADE IN BOSTON**

ON SALE AT THE BETTER STORES

## EVENING DRESS SUITS

A splendidly tailored—absolutely correct Suit of unfinished worsted

TALBOT  
SPECIAL **\$35.**

Tuxedo Suits, all sizes	- -	\$33.00
Separate Dinner Coats	- -	\$20.00

## TALBOT COMPANY

395-403 WASHINGTON ST., BOSTON, MASS.



Send your boy a  
**KAMP KIT PACK**  
 by Parcel Post. If your  
 grocer does not keep them he  
 can get one for you.  
**NATIONAL BISCUIT COMPANY**  
*D.S. Uneda Biscuit*

*Complete for  
 camp life  
 in the field*

*Order for  
 Camp life in the  
 field*

**KAMP KIT PACK**  
 NATIONAL BISCUIT COMPANY

**KAMP KIT PACK**  
 NATIONAL BISCUIT COMPANY

ANOLA  
 LOTUS  
 FIG NEWTOPS  
 LEMON SWAPS  
 PEANUT SANDWICH  
 PEANUT SANDWICH  
 2U ZU GINGER SWAPS  
 FIVE O'CLOCK TEA BISCUIT  
 NATIONAL BISCUIT COMPANY

1849 ————— 1918

To make room for mechanics who are remodelling our store, we now offer a large portion of our stock at

## Twenty Per Cent Discount

ON WINTER CLOTHING FOR MEN,  
 YOUNG MEN AND BOYS

Suits, Overcoats, Ulsters  
 Fur Coats, Fur-Lined Coats  
 Sheep-Lined Coats

## Macullar Parker Company

400 Washington Street

# Tremont Theatre

JOHN. B. SCHOEFFEL Proprietor and Manager

---

THE SAFEST THEATRE IN BOSTON

Equipped with the celebrated Regan Water Curtains which are positive in their action. Also an Asbestos Curtain.

---

---

WEEK OF JANUARY 28, 1918

EVENINGS at 7.45 SHARP  
MONDAY, WEDNESDAY and SATURDAY MATINEES at 2.15

---

DAVID BELASCO

PRESENTS

# THE BOOMERANG

A Comedy in Three Acts

By

WINCHELL SMITH and VICTOR MAPES

---

**HERRICK**  
COPLEY SQUARE

Call  
Back Bay 2328  
Connecting  
Five  
Distinct Lines

**TICKETS**  
ALL THEATRES

# The Brunswick

BOYLSTON AND CLARENDON STREETS

Awaits You in Its New Dress and with Its New Features

**The Cafe** for Ladies and Gentlemen, with its superb environment replaces the inconveniences of home in these cold and coalless days.

**Afternoon Tea Dansant** 4 to 6 P. M.

**Dinner Dances** 7.30 to 11 P. M.  
Music by Meyer Davis' Orchestra, so famous in Philadelphia and Washington.

Service a la carte in all restaurants, 7 A. M. to 12 Midnight.

**The Owl Tap** is quite the most comfortable lounge and smoking room in town for men.

Hotel Lenox Under Same Management



DIAMOND  
JEWELRY

WATCHES  
CLOCKS

SILVER  
PLATE

ANTIQUES

STATIONERY

CHURCH GOODS

**BIGELOW, KENNARD & CO. Inc.**  
COR. WEST & WASHINGTON ST., BOSTON

## CAST

Dr. Gerald Sumner.....	Arthur Byron
Budd Woodbridge.....	Wallace Eddinger
Preston de Witt.....	Gilbert Douglas
Heinrich.....	Richard Malchien
Hartley.....	John N. Wheeler
Mr. Stone.....	John Clements
Virginia Xelva.....	Martha Hedman
Grace Tyler.....	Ruth Shepley
Marion Sumner.....	Mary Elizabeth Forbes
Gertrude Ludlow.....	Louiszita Valentine
Mrs. Creighton Woodbridge.....	Kathryn Keys
GUESTS—Elizabeth Douglas, Helen Marche, Ruth Wheeler, Helen Slosson, George Spelvin, A. C. Rivers, James Ward.	

The Pianos, Pianolas and Victrolas used in this theatre are furnished by the M. STEINERT & SONS CO., Steinert Hall, 162 Boylston Street

# Meyer Jonasson & Co.

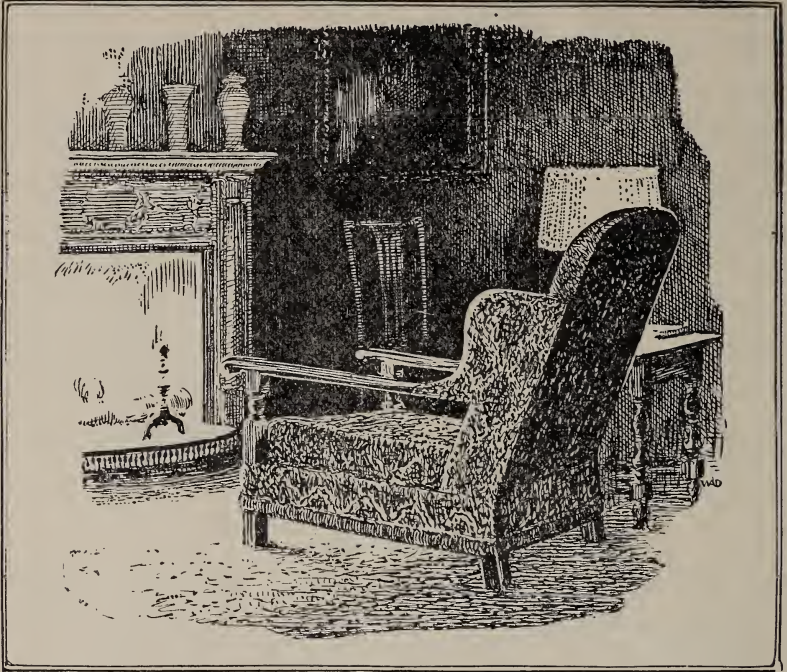
*TREMONT AND BOYLSTON STS.*

## FURS

THAT ARE DEPENDABLE IN QUALITY

AND AT

HONEST PRICES



## “Keep the Home Fires Burning”

Save and spend wisely, thrift or luxury in excess may become a National weakness, for never in the Nation's history was it so vital to have *good business* and to have the least possible departure from the normal home life.

**Paine Furniture Company**  
BOSTON

ACT I—A Doctor's Office

ACT II—A Living Room

ACT III—Same as Act I

TIME—Autumn

Play produced under the personal supervision of Mr. Belasco  
Scenes by Ernest Gros

N. B.: During the State Fuel Committee ruling on the termination of  
all performances at theatres —

The doors will be opened at 7.15 evenings.

The curtain will rise positively at 7.45.

Matinees Wednesday and Saturday at 2.15.

## COLLINS & FAIRBANKS CO.

Our Entire Winter Stock of Men's and Women's

*FURS and  
Cloth Coats*  
— at —  
*Reduced Prices*

383 WASHINGTON ST., BOSTON

## GIFTS *for* EVERY OCCASION

The worth-while novelty or unusual gift can always be found at STOWELL'S. From our Silver Room on the ground floor to our Art Room on the second floor there is everywhere ample opportunity for expression of personal taste.

Sterling Silverware

Marble Statuary

Cut Glass

Clocks

Watches

Lamps

Diamonds

Jewelry

*A. Stowell & Co. Inc.*  
 24 Winter Street  
*Jewelers for 95 Years*

## ANNUAL MARK DOWN SALE OF THE FINEST FOOTWEAR

**R**EDUCTIONS from 25 to 33 $\frac{1}{3}$  per cent. The sharpest discounts ever offered in our annual sale, extending over almost our entire stock of fine footwear for men, women and children.

**THAYER McNEIL COMPANY**

47 TEMPLE PLACE

15 WEST STREET



(Extract from Webster's Dictionary)

Boom-er-ang, N. A very singular missile weapon, used by the natives of Australia; when thrown from the hand, with a quick rotary motion, it describes very remarkable curves, according to the manner of throwing it, and finally taking a retrograde direction, so as to fall near the place from which it was thrown, or even very far in the rear of it. IN INEXPERIENCED HANDS THE BOOMERANG RECOILS UPON THE THROWER, SOMETIMES WITH VERY SERIOUS RESULTS.

Miss Hedman's gowns by Henri Bendel  
Other gowns by Mme. Rose, The Green Shop  
The physician's surgical equipment made by the Crown  
Surgical Instrument Company of New York

#### REMOVING A CURRENT DELUSION

The widespread impression that because of early beginning and early ending the plays at the theatres have been shortened is wholly mistaken and groundless. Every piece at every theatre is acted without the smallest omission, exactly as it ran before the new regulations took effect. Prompt beginning and brief intermissions save all necessary time, and the audience receives "full value."—By H. T. Parker in The Boston Transcript.

*Help Save Wool---Buy*

# WASH DRESSES

At Slattery's Annual Sale, February 5th

The distinctive new fashions of the coming Spring season. Cotton dresses, gingham dresses, voile dresses, percale dresses. Styles and sizes for women, misses and girls.

**\$3.50 TO \$10.50** AND UPWARD

**E.T. Slattery Company**

*Established 1867*

TREMONT STREET

BOSTON, MASS.



WE ANNOUNCE OUR ANNUAL  
**FEBRUARY CLEARANCE SALE**  
**OF FINE FOOTWEAR**  
 FOR MEN, WOMEN AND CHILDREN

This Sale offers an unusual opportunity to purchase the best footwear at greatly reduced prices.

Liberal price reductions in nearly all lines. Exceptional bargains where we have not a full assortment of sizes.

**T. E. MOSELEY CO., 160 TREMONT STREET**



You take no chances when you buy Stetson Shoes because the quality is maintained and the prices are based on quality alone.

SOLE BOSTON AGENTS

*Shuman & Co.*  
 Boston  
 Shuman Corner  
 THE SERVICE STORE

## FOR MR. BELASCO

Business Manager.....	Harry S. Alward
Acting Manager.....	Frank Young
General Stage Manager.....	Louis Massen
Stage Manager.....	John N. Wheeler

The Tremont Theatre Orchestra, under the direction of  
Mr. Viggo S. Arntzen, will play the following selections:

"The Star-Spangled Banner".....	Key
"Our American Boys".....	Mrs. H. E. Moore
"Miss Springtime".....	Kalman
Waltz, "Love Scenes".....	Andre
Finale, "Soldier Boys of Uncle Sam".....	Lurvey

NEXT WEEK --- SEVENTH WEEK

# THE BOOMERANG

## HOTEL WESTMINSTER

TELEPHONE, BACK BAY 1630

### WINTER GARDEN

"IT BREATHES ATMOSPHERE"

The Only Place of Its Kind in Boston

A Garden of intime refinement where before  
or after the Theatre you can sit among the  
Flowers and Dine on a Menu of infinite variety

#### HECTOR

with his orcheatra, NINA DE CANE and FRANCESCO  
SAVASTA will satisfy your Musical Fancies

#### DANCING

every Wednesday and Saturday evenings to the tunes  
of the Town's Foremost "Jazz Orchestra"  
in the new Ball Room



## A Guarantee

When you buy our Gloves you will notice that our name is stamped on the buttons. This is your protection.

It is our Guarantee of

**Perfect Fit  
Material  
Workmanship**

We have all shades and styles for men and women

After buying your gloves, see the great variety of goods we carry for the boys in the army and navy.

**LONDON HARNESS COMPANY**

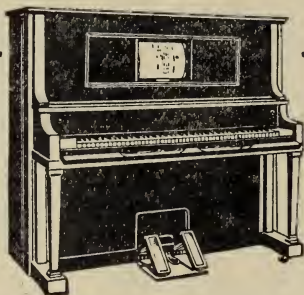
176 DEVONSHIRE & 27 FEDERAL STREETS

*Boston*



# The ANGELUS

C. C. Harvey Co.  
Exclusive  
Representatives



\$25

*Places an  
Angelus in  
your home*

**T**O SPEAK or write correctly you must punctuate—to produce music correctly you must do the same.

Fast and slow—loud and soft changes are not music. On the Angelus Player alone is it possible to bring out all the varied emotions of the heart. **What the baton is to an orchestra, the Phrasing Lever (found only on the Angelus) is to a player-piano.**

With the marvelous phrasing lever you control the player-piano, you give your own interpretation, you are doing the playing, you are master of the music, you are at ease, you are punctuating intelligently.

**With an Angelus YOU become master of all music.**

*You are cordially invited to call  
and hear the Angelus—the most  
Artistic player-piano.*

## C. C. HARVEY & CO.

Pianos, Player-Pianos, Victrolas, Edison Phonographs and Records

**144 Boylston St. Opposite Common Boston**

57 Main St., Brockton

22 Market St., Lynn

# ERNEST SMITH

*Automobiles Overhauled  
Rebuilt and Repaired*

ALL MAKES OF CARS

44 Roger Street, Newton Highlands, Mass.

TEL. NEWTON SOUTH 526

**TAXI? CALL BACK BAY**

**5 5 0 0**



**TAXI-SERVICE CO.**

**STANDS**

**TOURAINÉ, LENOX, THORNDIKE**

**YOUNG'S, PARKER HOUSE**

**SHAWMUT BANK, 50. STATION**

**HARVARD CLUB, NO. STATION**

**ESSEX, ENGINEER'S CLUB**

And BRUNSWICK HOTEL



# Chamberlain

**HATS  
FOR  
MEN**

2 STORES % WASHINGTON ST.  
311 Opposite the Old South Church  
659 Gayety Theatre Building



## Helene L. Sweney School of Dancing

Tel. Back Bay 57978

136 MASSACHUSETTS AVE., (at Boylston St.)

### OPEN FOR REGISTRATION

Expert instruction in all forms of dancing, under the personal direction of HELENE L. SWENEY; also, the art of leading, which is most essential in all modern dances.

The most popular of this season's accepted dances are:

Jazz Fox Trot, One-Step, Ramble Waltz, etc.

Private lessons day or evening; classes every Monday and Thursday evenings at 8.15 P. M.

Private normal course for teachers.

Assemblies every Tuesday evening at 8.15 P. M.

Willwerth's Jazz Band.

## WHITING-ADAMS BRUSHES

Disgusted with the brush you are using? Some brushes have no excuse for being on earth. Have you one of this kind?

Try a WHITING-ADAMS BRUSH

Do you know what WHITING-ADAMS means?

It means satisfaction in brushes, good work, long wear, best results. Send for Illustrated Literature.

**JOHN L. WHITING-J. J. ADAMS CO., Boston, U. S. A.**  
Brush Manufacturers for Over One Hundred Years

Whiting-Adams Brushes Awarded Gold Medal and Official Blue Ribbon,  
the Highest Award at Panama-Pacific Exposition, 1915



**THEATRE  
TICKETS**

**BURKE**

**ADAMS  
HOUSE**



## ECONOMY

The new "Peerless Eight" equals in efficiency any make of car at double the price.

**Power — Speed — Style —  
Comfort and Economy are  
factors not to be overlooked.**

**10,000 Miles Tire Guarantee  
14 Miles to the Gallon on Gas**

---

**Immediate Deliveries on  
All Types of Closed Cars**

---

**Any make of car taken in trade**



# Boston's Leading Theatres and Successes

## TREMONT THEATRE

JOHN B. SCHOEFFEL  
Manager

Evenings at 7.45

Matinees

Mon., Wed. and

Sat. at 2.15

WEEK OF JANUARY 28..... SIXTH WEEK

First Time Here

DAVID BELASCO Presents

# THE BOOMERANG

By Winchell Smith and Victor Mapes

With the Original Belasco Theatre, New York

Cast Intact

Seats On Sale Two Weeks in Advance

## HOLLIS ST. THEATRE

CHARLES J. RICH  
Manager

Evenings at 7.45

Matinees

Mon., Wed. and

Sat. at 2.20

WEEK OF JANUARY 28..... SIXTH WEEK

THE SEASON'S SUPREME SENSATION

Bayard Veiller's Great Detective Melodrama

# THE 13th CHAIR

With MARGARET WYCHERLY

and the Original Cast from its run of ONE YEAR  
in New York

Seats on Sale Two Weeks in Advance

## COLONIAL THEATRE

CHARLES J. RICH  
Manager

Evenings at 7.45

Matinees

Mon., Wed. and

Sat. at 2.00

WEEK OF JANUARY 28.....FIRST WEEK

RAYMOND HITCHCOCK

— IN —

# HITCHY-KOO

— WITH —

LEON ERROL - IRENE BORDONI

IGNACIO MARTINETTI

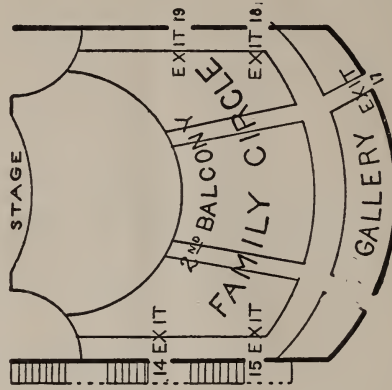
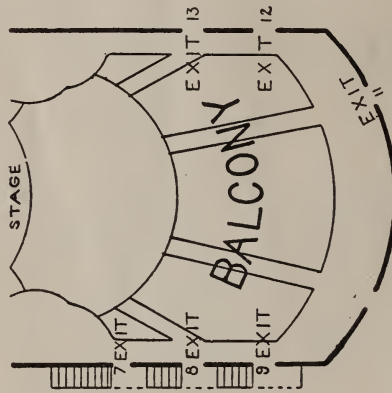
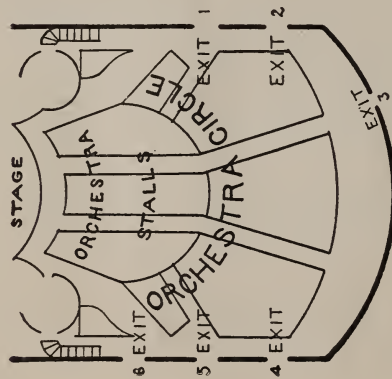
JOSEPHINE WHITTELL

SYLVIA JASON

GEORGE MOORE

(Florenz) AMES & WINTHROP (Adelaide)

# EXIT PLANS



# TREMONT THEATRE

## The Choice of Discriminating People

You too may acquire that graceful carriage.

The first essential is to be sure footed. Those who *know* wear Cat's Paw Cushion Rubber Heels, because the Foster Friction Plug prevents slipping.

Here is the secret of that even balance maintained with perfect rhythm in dancing—an easy swinging walk. Here is foot comfort and protection for every step of the day.

You may have them put on the slenderest heels you have just as neatly as on walking shoes. They're small, almost invisible.

Ideal for the home—they not only lessen fatigue, but there are no holes to track mud and dirt. Every member of the family should wear Cat's Paws. Then the polished floors would show no heel marks.

They cost no more than the ordinary kind. Worn by millions who have tried other kinds first—and the name is easy to remember.



**CAT'S PAW**  
CUSHION  
**RUBBER HEELS**



### FOSTER TRED-AIR HEEL CUSHIONS

Wear these "cushions of air" inside your shoes—they protect the stockings from nails—improve the fit of the shoe and add a trifle to the height. If your Dealer cannot supply you send us his name, 25c. and size of your shoe and we will send you a pair prepaid.



50c. attached. Black, White and Tan.  
For Men, Women and Children. All Dealers.

**FOSTER RUBBER CO.**

105 Federal Street - - - Boston, Mass.

*Originators and Patentees of the Foster  
Friction Plug which Prevents Slipping.*

# VOSE GRAND



The VOSE is a PIANO  
that will fully bear out in your HOME all that its high  
standing would suggest. YOU KNOW IN ADVANCE  
THAT IT IS GOING TO GIVE SPLENDID SERVICE  
AND SATISFACTION

VOSE & SONS PIANO CO., 160 BOYLSTON ST., BOSTON, MASS.